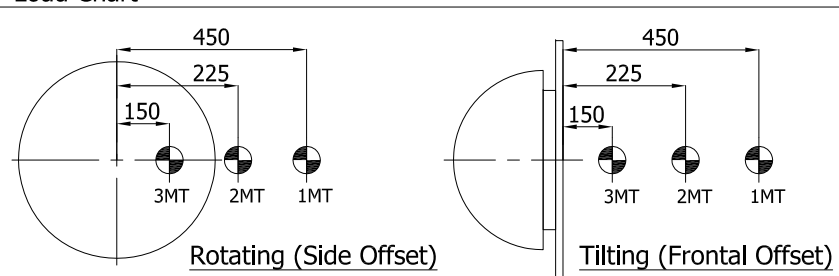


Specifications for Hydraulic Positioner		
1	Model	PH3-1.2C-WE
2	Capacity / Frontal offset	3 Ton / 150mm
3	Capacity / Side offset	3 Ton / 150mm
4	Table Size	Dia.1200mm
5	Rotation Speed	0.081~0.81rpm running at 5~50Hz
6	Tilt Speed	70s via hydraulic
7	Tilt Range	0~135°
8	Slots	6 x 22mm Through Slots for M20 T-nut to DIN 650
9	Rotation Drive Control	1.5kW AC Inverter
10	Rotation Drive	1.5kW AC Motor c/w Force Cooling Fan (380/400/415V-3P-50Hz or 440/460/480V-3P-60Hz)
11	Tilt Drive Control	Via Hydraulic Power Unit
12	Elevate Range of Arm	0~45°
13	Elevate Range of Arm Speed	45° in 37s running at 50Hz
14	Tilt & Elevation Drive	Hydraulic Power Unit 21MPa 2.2kW (380/400/415V-3P-50Hz or 440/460/480V-3P-60Hz)
15	Earthing	Rotary Earth, 800A
16	Electrical Panel	Yes
17	Incoming Supply	415V-3P-50Hz
18	Control Voltage	24Vac
19	Control Means	Via Push Button Pendant c/w 6m Cable and Double Foot Switch c/w 5m Cable
20	Surface Preparation	Gritblast to SA2.5
21	Painting	2 Coats Zinc Phosphate, 1 Coat Polyurethane
22	Colour	RAL3003 Red & RAL9005 Black underside of table only
23	Qty	1 Unit
24	Weight	1450kg
25	Shipping Size	191 x 144 x 80 cm

Note:

1. This drawing is accurate at the time of preparation and maybe subjected to final design changes.

Load Chart



<h1>W.A.M.</h1>			PROJECT/MODEL :		PH3-1.2C-WE	
			CLIENT :			
DRAWN			NAME	DATE	DWG. NAME : PH3-1.2C-WE DWG. NO. : PD-5063-GA20	
			SF	2019-11-04		
APPROVED						SCALE: N.T.S. REVISION: A SHEET NO: 1 OF 1